

UNIVERSITY CENTRE TRURO & PENWITH



**YOUR
FUTURE**
OUR FOCUS

Your pocket guide to
university level courses



Welcome to the pocket guide to
university level study at University
Centre Truro & Penwith.

Located across three modern campuses in Cornwall and with a strong commitment to providing high-quality education, the University Centre boasts a diverse range of undergraduate and postgraduate programmes, designed to equip students with the skills and knowledge needed for successful careers.

Learn what you love where you love

Flexibility.....	6
Smaller class sizes	8
Personal support at every step	10
Quality courses designed to take you places	12
Purpose built	14

COURSES

Commercial Hub	18
Education Hub	24
Health Hub	28
Apprenticeships	32
Pathway courses	36

Student essentials

University of Plymouth	40
Qualifications explained	42
Entry requirements	44
UCAS tariff.....	45
Fees & costs	46
Locations.....	48
Why not visit us and see for yourself?	50
How to apply	51



LEARN WHAT YOU LOVE WHERE YOU LOVE

You can have the best of both worlds

A great university education is just one reason to stay in Cornwall.

Cornwall is fast gaining recognition for its spirit of innovation, creativity and entrepreneurialism.

It has a can-do, inclusive culture that attracts people of all ages, backgrounds and personalities. Studying at the University Centre Truro & Penwith, with access and links to some of the region's most dynamic industries and organisations, puts you in the heart of this transformation.

Flexibility

Lectures strategically condensed into a few days each week mean you can fit life around lectures.

Unlike many universities, our condensed timetables mean that classes take place over two full days in a week, leaving plenty of free time for study, a part-time job or family commitments.

Courses are delivered over three terms that align with the school and college terms where possible, with three reading weeks that coincide with half-terms.



The courses were flexible and well laid out and we always knew what to expect.”

Dan - BA (Hons) Business, Enterprise and Leadership

Smaller class sizes

The University Centre prides itself on its smaller class sizes where you are known as an individual and won't get lost in a sea of students.

This helps our students increase their knowledge and confidence. It pushes them to view theories from all angles as lectures and seminars turn into engaging discussions.



Lectures feel almost 1-1 and discussions are easier to have.”

Personal support at every step

There may be times when you need some learning support, have money issues, need career advice or are struggling to get your head around an assignment; don't worry, there's always someone here to help you.

We are **matrix** accredited, meaning that advice and support services are centred on your personal career, learning, work and life goals.



The tutors are just phenomenal; they give you all the additional support you need."

Toni - BSc (Hons) Adult Nursing

Quality courses designed to take you places

The University Centre has achieved a Silver rating in the 2023 Teaching Excellence Framework (TEF) thanks to the inspirational teaching, research and innovative practices of its staff.



The University Centre's student experience was judged to be of a "very high quality" while its curriculum was recognised as "aligning with local skills needs, informed by its engagement in a matrix of networks."



The lectures, tutors, and friendships I forged along this journey were truly remarkable."

Alice - BSc (Hons) Applied Sport & Health Science

Purpose built

Alongside high-quality teaching and amazing resources, students will find industry-standard equipment and fantastic facilities across all of our sites.



LEARNING CENTRES



STUDY PODS



GYMS



SOCIAL SPACES



SPECIALIST STUDIOS



NURSING SUITES



COURSES

Scan the code to see details of all
University Centre courses.

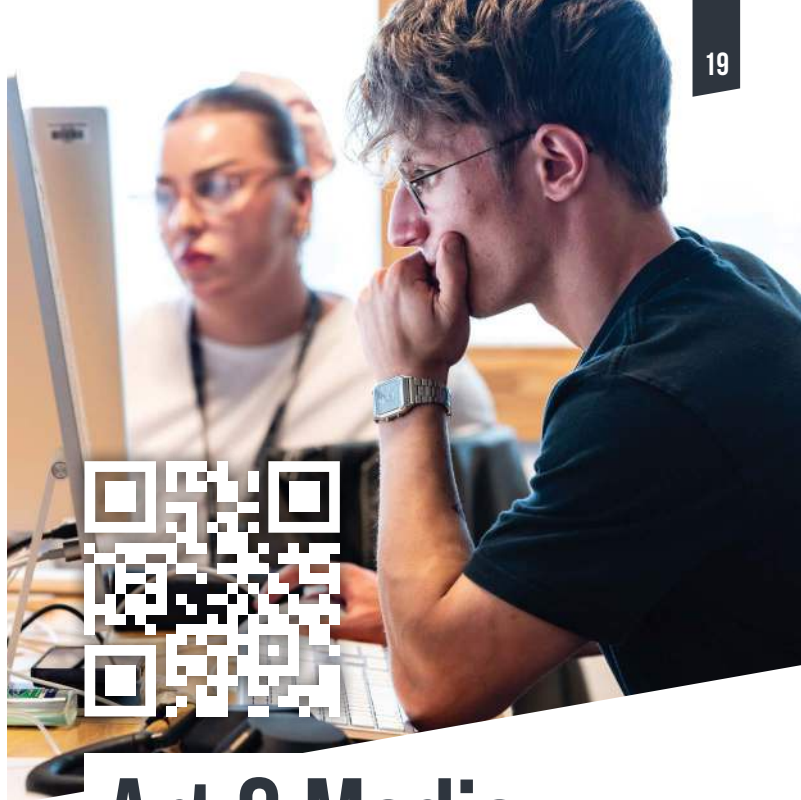
Courses available at Truro **T**, Penzance **P**, Bodmin **B**

Please note that courses are awarded by the University of
Plymouth unless stated otherwise. Courses are offered subject to
satisfactory approval, recruitment and funding.



COMMERCIAL HUB

With **career-focussed courses** on your doorstep, the **Commercial Hub** provides a **dynamic and supportive** learning environment where you can thrive and **achieve your full potential**. The diverse range of courses offered is meticulously designed to blend theoretical knowledge with practical skills, ensuring graduates are well prepared for the challenges of their chosen careers.



Art & Media

HNC/HND Fine Art*

P

FdA Film, Media & Photography

T

BA (Hons) Applied Media [top up]

T

* Awarded by Pearson



Business & Law

FdA Business	📄
FdSc Law with Business	📄
FdSc Law with Criminology and Criminal Justice	📄
LLB (Hons) Law [top up]	📄
BA (Hons) Business, Enterprise and Leadership [top up]	📄



Computing & IT

HNC/FdSc Cyber Security	📄
FdSc Computing Technologies	📄
FdEng Software Engineering	📄
BSc (Hons) Applied Computing Technologies [top up]	📄



Engineering & Construction

HNC Modern Methods of Construction*#	①
HNC/HND Manufacturing Engineering*	①
HNC/HND Mechanical Engineering*	①

* Awarded by Pearson # Part-time route only



History & Archaeology

FdSc Archaeology	①
FdA History, Heritage and Culture	①
BSc (Hons) Archaeology [top up]	①

EDUCATION HUB

The University Centre's Education Hub is dedicated to developing the **next generation of educators**, offering a range of courses designed to inspire and equip you with the necessary skills to **excel** in educational settings.



Staff who teach on our programmes thrive on developing students that are going into the world of education and really make a difference to learners within their educational setting."

Jess Cowen - Programme Team Leader - Education



Education Hub Courses

FdA Childhood Education	T P
FdA Early Years Practice	T P
FdA Teaching and Learning	T
BA (Hons) Education & Training [top up]	T
Certificate in Education	T
Postgraduate Certificate in Education	T



Scan the code for course details

HEALTH HUB

With courses all over Cornwall, the Health Hub offers a range of **dynamic courses** designed to equip you with the **skills and knowledge** needed to thrive in various **health and social care** settings. We are committed to fostering a **supportive and innovative** learning environment, bridging the gap between academic theory and real-world application.



The opportunities and facilities we have here mean that people can access careers in Health without needing to leave the county. We have great working partnerships with the University of Greenwich and local Trusts and are proud to be working alongside them."



Health Hub Courses

HNC/HND Applied Psychology	T P
FdSc Health & Wellbeing	P
FdSc Nursing Associate*	T
FdSc Sports Therapy	T
FdSc Youth, Social and Community Studies	T P
BSc (Hons) Adult Nursing*	T
BSc (Hons) Applied Social Science [top up]	T
BSc (Hons) Applied Sport and Health Science	T
BA (Hons) Human Behavioural Studies [top up]	T P
BSc (Hons) Mental Health Nursing*	T
BSc (Hons) Operating Department Practitioner*	T

* Awarded by the University of Greenwich



Scan the code for course details

Higher Level Apprenticeships

If you'd like to **earn while you learn** and blend your university course with **quality work experience**, the University Centre offers a range of University Level Apprenticeships in partnership with **Cornwall's top employers.**



"The staff at the College were highly informed and well placed to help me with my career choices. The skills I learnt during the course, I use every day."

Tom - Network Engineering Apprenticeship Alumni



Higher Level Apprenticeships:

These programmes are often suited to those that have already completed an entry-level apprenticeship, or have previous qualifications and work experience that allow them to start their apprenticeship journey at a higher level.

Hospitality Manager	1
Network Engineering	1
Nursing Associate	1*
Operating Department Practitioner	1*
Registered Nurse	1*
Software Developer	1

*Students will attend the STEM Health and Skills Centre, Bodmin for select modules where the Centre's facilities are required.



truro-penwith.ac.uk/apprenticeships

PATHWAY COURSES

We welcome students from a wide variety of backgrounds, of all ages and with a range of different experiences and skill-sets.

Pathway courses provide a grounding in principles, theory and experience for those who have perhaps been away from education for a while or for students who initially took a non-traditional route for their education and do not meet the entry requirements of our university level courses. Aiming to give as many students the opportunity to apply and complete their studies successfully, these courses will provide plenty of study support to prepare students to enter Higher Education and apply for a degree programme.



ACCESS to Higher Education Diplomas

Access to HE Diplomas are a stepping stone to a wide variety of university level courses.

Pathways:

- Art & Design **T**
- Computing & IT **T B**
- Creative Arts **P**
- Creative Media & Photography **T**
- Health & Social Care **P**
- Humanities **P**
- Humanities, Teaching & Law **T**
- Medicine **T**
- Nursing & Human Sciences **T B**
- Psychology & Social Work **T**
- Science **T**

Most Pathways are taught over three days for 16 hours per week, over 30 weeks. Where possible, courses have parent friendly hours between 9.15am and 4.15pm, giving you greater flexibility.



Scan the code
for course details



Foundation Diploma in Art, Design & Media **T**

This one-year course encourages you to develop creative skills and explore a wide range of specialist areas.

You will learn new techniques and challenge your imagination with a broad multi-disciplinary art and design experience. It guides you to make informed decisions about your future career prospects and progression to university courses. You will be provided with the information and skills necessary to determine your own path within the art, design and media industry.



Scan the code for course details

UNIVERSITY OF PLYMOUTH

Students on University of Plymouth courses can access the University's online services, use its library, electronic resources and learning support materials through its web-based student portal. You can link in with the Students' Union (UPSU) and access clubs, societies, volunteering opportunities, student representation and University sport facilities.



The University of Plymouth is renowned worldwide for its high-quality research, teaching and innovation. With a mission to Advance Knowledge and Transform Lives, the University drives the global debate in disciplines from marine and maritime to medicine, law, computing and climate action.

A three-time winner of the Queen's Anniversary Prize for Higher and Further Education – most recently in respect of its pioneering research on microplastics pollution in the ocean – Plymouth consistently ranks among the world's leading universities for its innovation, research and teaching in relation to the United Nations Sustainable Development Goals.

Plymouth's teaching and learning excellence is reflected in one of the highest numbers of National Teaching Fellows of any UK university. With over 19,000 students, plus a further 5,900 studying for a Plymouth degree at partner institutions in the UK and internationally, and over 190,000 alumni in 158 countries, the University has a growing global presence.

plymouth.ac.uk

QUALIFICATIONS EXPLAINED

LEVEL 4

Higher National Certificates (HNC) are like the first year of University study and aim to meet the needs of employers. When completed, you can apply for stage two of a related Foundation Degree or HND.

LEVEL 5

Higher National Diplomas (HND) help develop essential career skills and are equivalent to the first two years of University study, meaning that you can then progress to a top-up year in a similar subject.

Foundation Degrees (FdA or FdSc) are similar to the first two years of University study, but usually include a work placement to encourage practical, work-based learning in preparation for a career within the industry. Upon completion, you can progress to a top-up course or the third year of a full Bachelor's Degree.

Higher Apprenticeships are often suited to those that have already completed an entry-level apprenticeship, or have previous qualifications and work experience that allow them to start their apprenticeship journey at a higher level.

LEVEL 6

Bachelor's Degrees cover all three years of University study and are completed in one specific subject area. You can be awarded either an ordinary degree, or an honours degree if a dissertation or self-directed piece of work has been completed in your final year. After graduating, you can then progress onto a Master's Degree, PhD or a postgraduate Initial Teacher Training (ITT) course.

Top-up Degrees allow you to top-up your completed Foundation Degree, HND or an equivalent qualification to gain a full Bachelor's Degree (BA or BSc) and are similar to the third year of University study.

Degree Apprenticeships offer a balanced combination of practice-based and academic learning to enhance and consolidate your skills and knowledge.

ENTRY REQUIREMENTS

Foundation Degrees, HNDs and HNCs

For entry to Foundation Degrees, HNDs and HNCs, if you are under 21, you must hold either A Levels, a T Level, a National, Extended or Advanced Diploma, or an Access to Higher Education Diploma with a minimum of 48-112 UCAS points. If you hold an Advanced General National Vocational Qualification (AGNVQ) or a relevant Level 3 qualification achieved in the workplace, you will also be considered.

If you are aged 21 and over (mature students) without academic credentials, you will be considered on an individual basis, provided that you are capable of Higher Education study. You should have GCSE Maths and English at Grade 4/C or above, or an equivalent qualification at the same level.

Top-up Degrees

For entry to Top-up Degrees, you must hold a Foundation Degree, HND or an equivalent Level 5 qualification in a relevant subject area. Please note that there is a deadline for progression applications and places may be subject to availability.

Evidence of academic attainment will be required at interview and recognition of prior learning and experience will be considered individually. If you are unsure about your qualifications meeting the entry requirements please contact our applications team.

UCAS TARIFF

UCAS Tariff	168	160	152	144	128	120	112	96	80	72	64	56	48	40	32	24	16
Access to HE Diploma				D45M0P0 D30M15P0			D30M0P15 D15M15P15 D0M30P15				D0M15P30		D0M0P45				
BTEC Extended Diploma	D*D*D*	D*D*D	D*D*D	DDD	DDM		MMM	MMM	MMP		MPP		PPP				
T Level	D*			D		M		P (C+)		P (D or E)							
A Level												A*	A	B	C	D	E

Disclosure and Barring Service

You will have the opportunity to work with employers in the sector, either as an assessed part of your curriculum (Foundation Degree) or through voluntary or co-curricular activity. If you work in an environment where you engage with children or vulnerable adults you will be required to provide an Enhanced Disclosure and Barring Service (DBS) record with no entries (formerly Criminal Records Bureau [CRB]) before being successfully accepted onto the programme. You are expected to cover the cost of this process and provide evidence when requested, ideally at interview or enrolment rather than after starting the programme. If you are aware that you will have entries on your DBS record you should raise this with the University Centre Admissions team so that appropriate advice can be provided.

FEES & COSTS

Tuition Fees*	Full-time	Part-time
Plymouth HNC/HND & Foundation Degree	£8,224 p/a	£4,112 p/a
BA/BSc (Hons) & PGCE/Cert Ed	£9,250 p/a	£4,625 p/a
Greenwich Foundation Degree & Degree	£9,250 p/a	N/A

Tuition Fee Loans

If you are an eligible full-time or part-time undergraduate student, you can apply at any age for a Tuition Fee Loan to cover the cost of your University Centre programme. The funds from your tuition fee loan will be paid directly to the University Centre in three instalments.

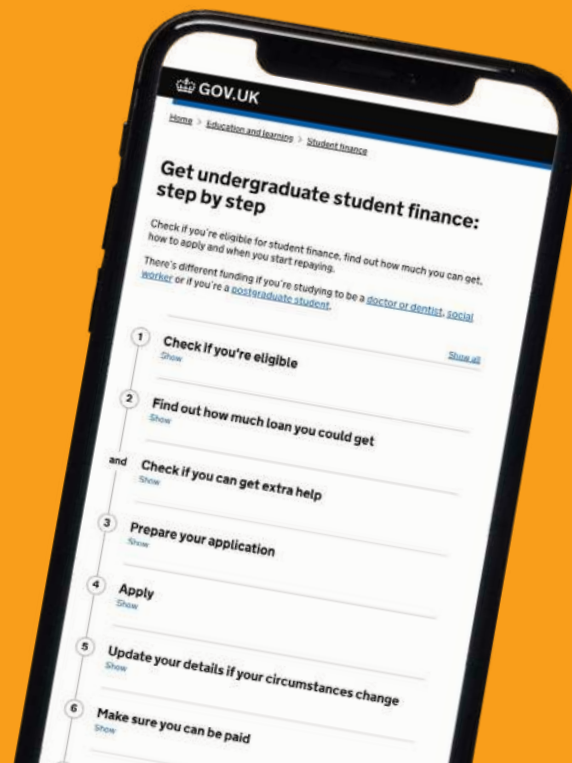
Maintenance Loans

Help with living costs may be available for the duration of your University programme in the form of a Maintenance Loan that attracts a low rate of interest. Maintenance Loan money is paid directly into your bank or building society at the start of each term, in three instalments.

Loan Repayment

Tuition Fee and Maintenance Loans will be repayable after you have finished the programme and are earning more than £25,000 per year. If earnings fall below the £25,000 threshold the repayments will stop until your earnings rise above the threshold again*.

*Correct as of August 2024. Tuition fees are reviewed each year.



You can find out how much financial support would be available to you by visiting:
gov.uk/student-finance

LOCATIONS

50.12N, 5.54W PENZANCE

Our Penwith campus in Penzance has to be seen to be believed - a mix of modern and traditional Cornish architecture gives a deep sense of character in inspirational surroundings.

50.47N, 4.70W BODMIN

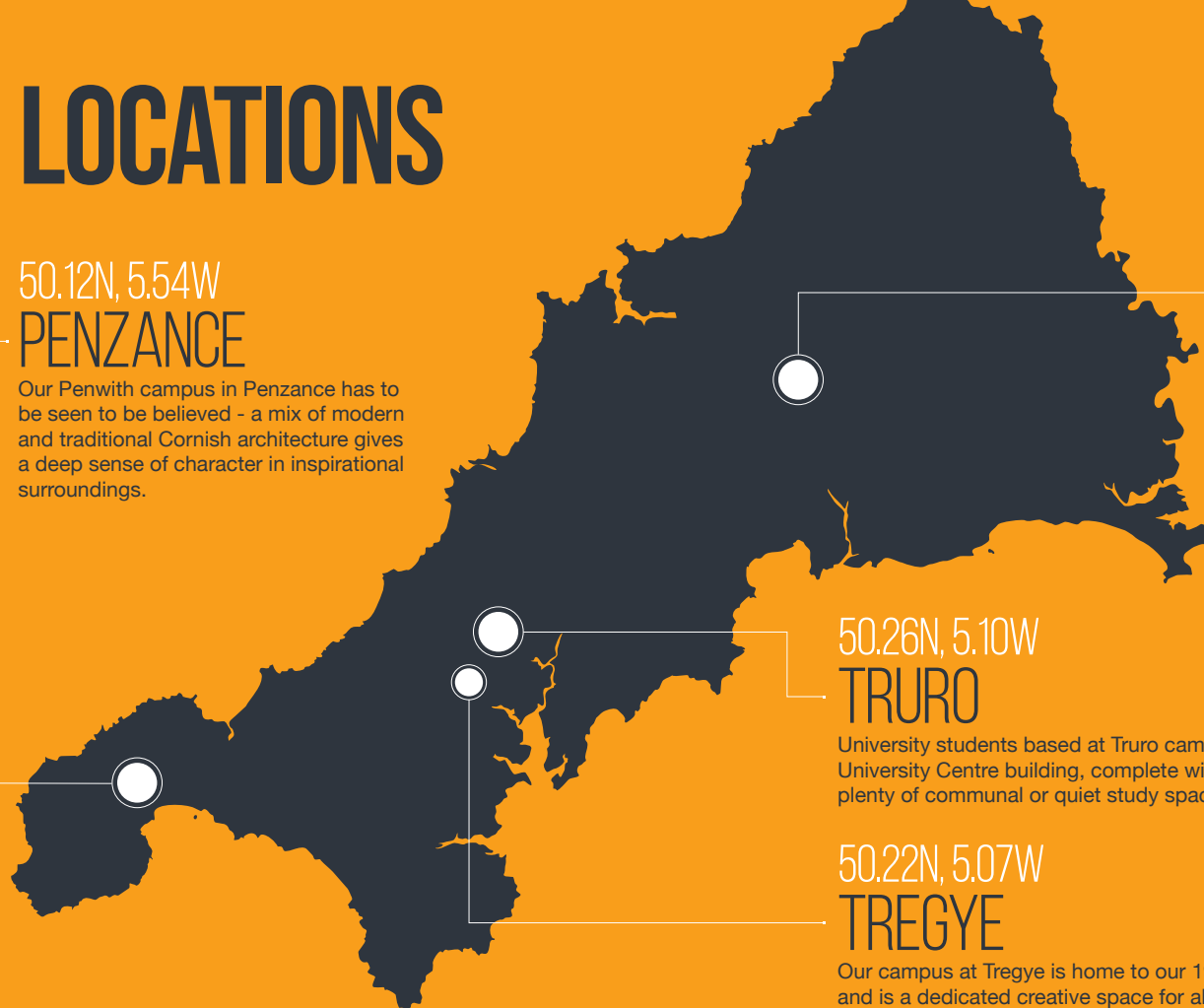
The STEM & Health Skills Centre is accessible to students in North and East Cornwall. Facilities include engineering workshops, a health simulation suite and modern digital technology.

50.26N, 5.10W TRURO

University students based at Truro campus enjoy a dedicated University Centre building, complete with café, learning centre and plenty of communal or quiet study spaces.

50.22N, 5.07W TREGYE

Our campus at Tregye is home to our 19+ Art & Design students and is a dedicated creative space for all aspiring creators.



WHY NOT VISIT US AND SEE FOR YOURSELF?

Open Events give you the opportunity to meet expert lecturers, tour the campus and gain insight from current students. Check the website for the next open event.

With flexibility at the heart of the University Centre's programmes, it is understood that life can be busy and it's difficult to find time to attend all events. That's why there is the chance to visit the campus on your terms; please contact the University Centre to book onto an informal tour.

We look forward to seeing you.



truro-penwith.ac.uk/openevents

HOW TO APPLY

For all full-time courses apply through **UCAS***

Check entry requirements

Apply online at ucas.com/hub

Attend an interview if required

Review all conditional and unconditional offers and request any additional choices through 'UCAS Extra'

Select a firm choice for your chosen course

Look on 'UCAS Hub' after receiving your results to find out if you have been offered a place

Make sure that your student finance is ready before you start your course

Missed the UCAS deadline? It's not too late to apply. Call us on 01872 305750 to discuss your options.

✱ For part-time routes and courses without a UCAS code contact the University Centre directly.



Find us on social

@unicentretp



01872 305750

heenquiry@truro-penwith.ac.uk

truro-penwith.ac.uk/uni



UNIVERSITY OF
PLYMOUTH



UNIVERSITY of
GREENWICH